



10 Rowlock Place Curlewis VIC

4 2 2

The Feel:

Inviting street appeal gives way to a haven of coastal living in this flawless single-level residence, nestled within a quiet, family-friendly neighbourhood. Designed with an emphasis on indoor-outdoor living, the home's light-filled interiors and a dreamy neutral palette ensure a warm and inviting ambience, while double-gated side access, desirable north-to-rear aspect, and leafy, easy-care environs promise a sought-after, laidback lifestyle. Wonderfully peaceful yet a short stroll to shops, the local primary school, and the lifestyle delights of the bay, it's a treat for growing families, downsizers, and weekenders in equal measure.

The Facts:

- Custom 4-bedroom home, presenting as new & still under construction warranty
- Easy-care 480sqm site backdropped by glimpses of Corio Bay
- Flowing single level ideal for growing families & lovers of effortless coastal living

[For full version visit the website](https://www.bellarineproperty.com.au)

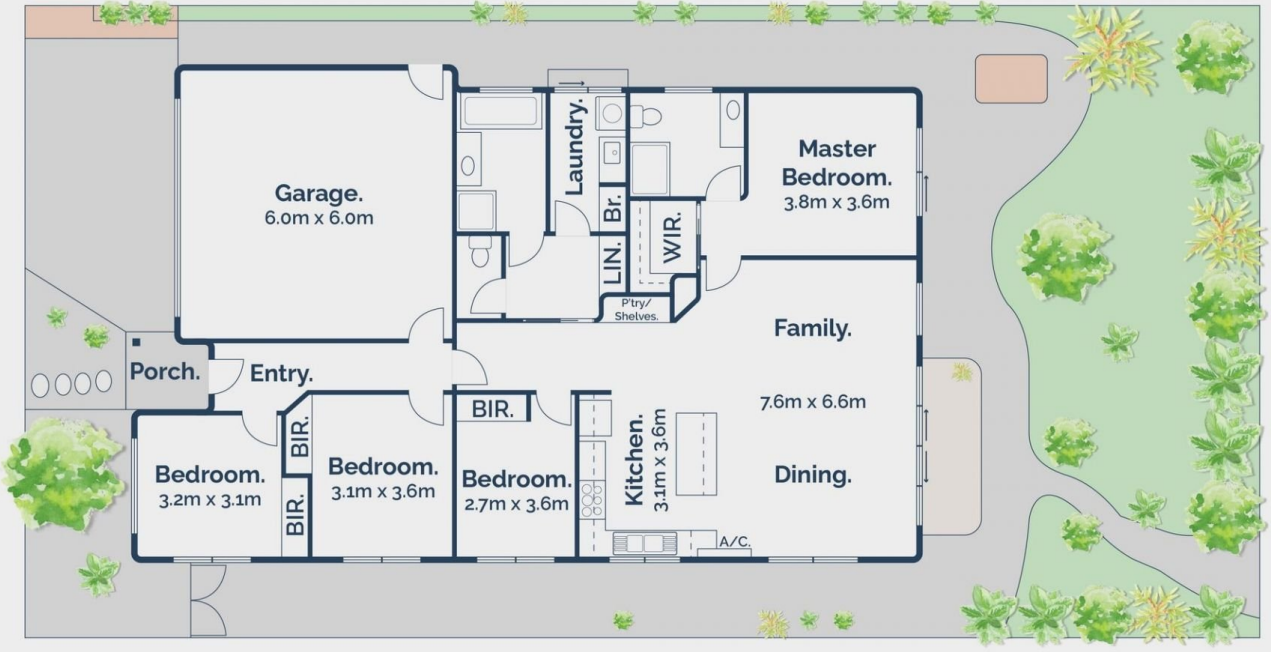
Type : House
Price : \$690,000-\$750,000
Land Size : 479 sqm
View : <https://www.bellarineproperty.com.au/8169070>



Lee Martin
03 5297 3888



Andrew Kibbis
03 5254 3100



4 2 2

10 Rowlock Place, Curlewis



Whilst bwrn.com.au has made every attempt to ensure the accuracy of the floor plan contained here, measurements are approximate and no responsibility is taken for any error, omission, or mis-statement. This plan is for illustrative purposes only.