



1/21 Kylemore Court Leopold VIC

3 2 1

The Feel:

Championing a quiet no-through road address central to bus stops, Leopold Primary School, Gateway Plaza and local sporting reserves, this contemporary townhouse delivers the perfect combination of convenience, comfort, and effortless liveability. Offering a bright and airy floorplan over a practical single level, there's plenty of space to unwind with a generous open plan living domain spilling out to a private alfresco zone, while residents can retire to any of 3 robed bedrooms including a spacious master with its own ensuite. The perfect package for discerning downsizers, savvy starters or astute investors, this low-maintenance gem is move-in ready and primed for total lifestyle ease.

The Facts:

- Modern 3-bedroom, 2-bathroom townhouse, situated at the top of a quiet cul de sac
- The home ticks all the boxes for low-maintenance living across an easy-care 291sqm (approx.)

[For full version visit the website](https://www.bellarineproperty.com.au/81229)

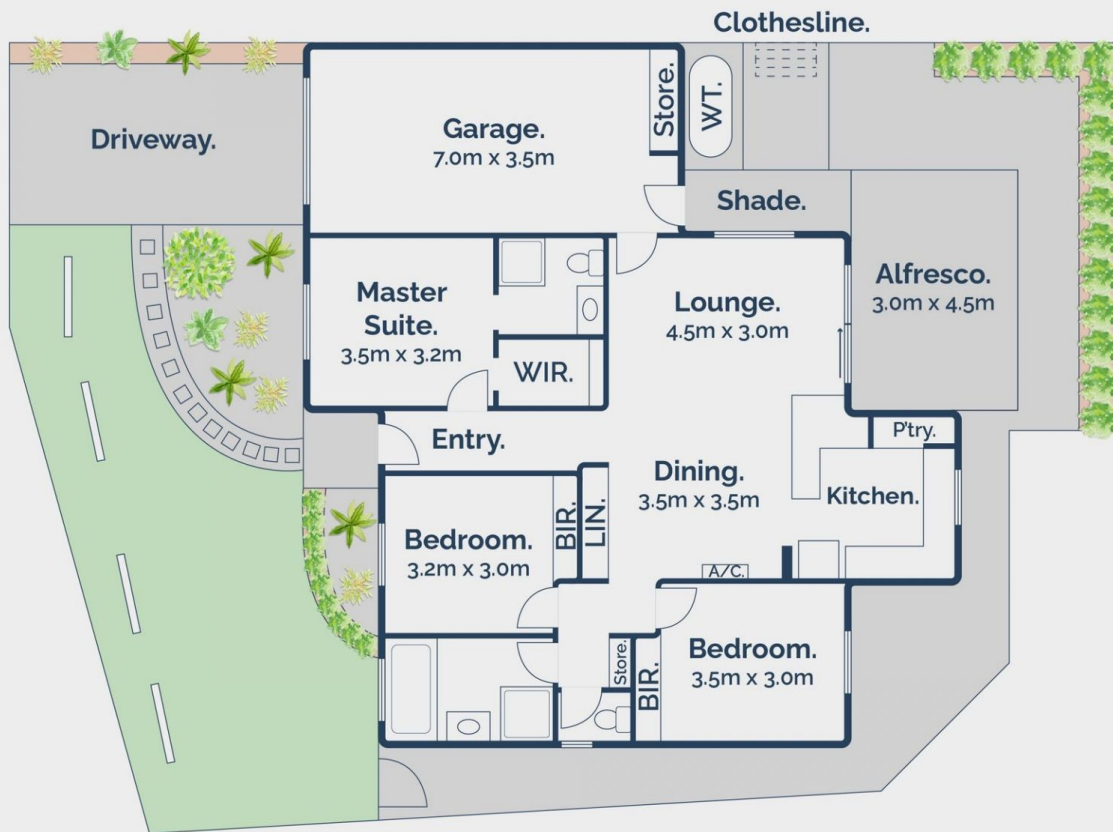
Type : House
Price : \$ 531,000
Land Size : 291 sqm
View : <https://www.bellarineproperty.com.au/81229>
18



Lee Martin
03 5297 3888



Andrew Kibbis
03 5254 3100



 3
  2
  1

21 Kylemore Court, Leopold


 bellarineproperty
 rentals commercial sales projects

Whilst bwrn.com.au has made every attempt to ensure the accuracy of the floor plan contained here, measurements are approximate and no responsibility is taken for any error, omission, or mis-statement. This plan is for illustrative purposes only.