



19 Sheepwash Road Barwon Heads VIC

3 1 1

The Feel:

Step into a quintessential beach shack that exudes charm and laid-back coastal living. Nestled among mature tea trees on a generous, flat 613sqm (approx) allotment, this well-maintained home offers immediate liveability while you consider its future promise. Perfectly positioned opposite Barwon Heads' 54 acre parklands, and within walking distance to the vibrant village, river precinct, and primary school, it's an ideal base for those seeking a tranquil escape, or a promising investment with ample potential for renovation, extension, or redevelopment (STCA).

The Facts:

- Excellent opportunity for renovation, extension, or dual occupancy design (STCA)
- Spacious, flat 613sqm (approx) block with enviable wide frontage
- Substantial Frontage & length allows for very adaptable plans
- Opportunity to maximise the desirable north aspect to expand and enhance (STCA)
- Cosy 3-bedroom shack with a true coastal vibe and plenty of character

Price : \$1,190,000-\$1,290,000

Land Size : 613 sqm

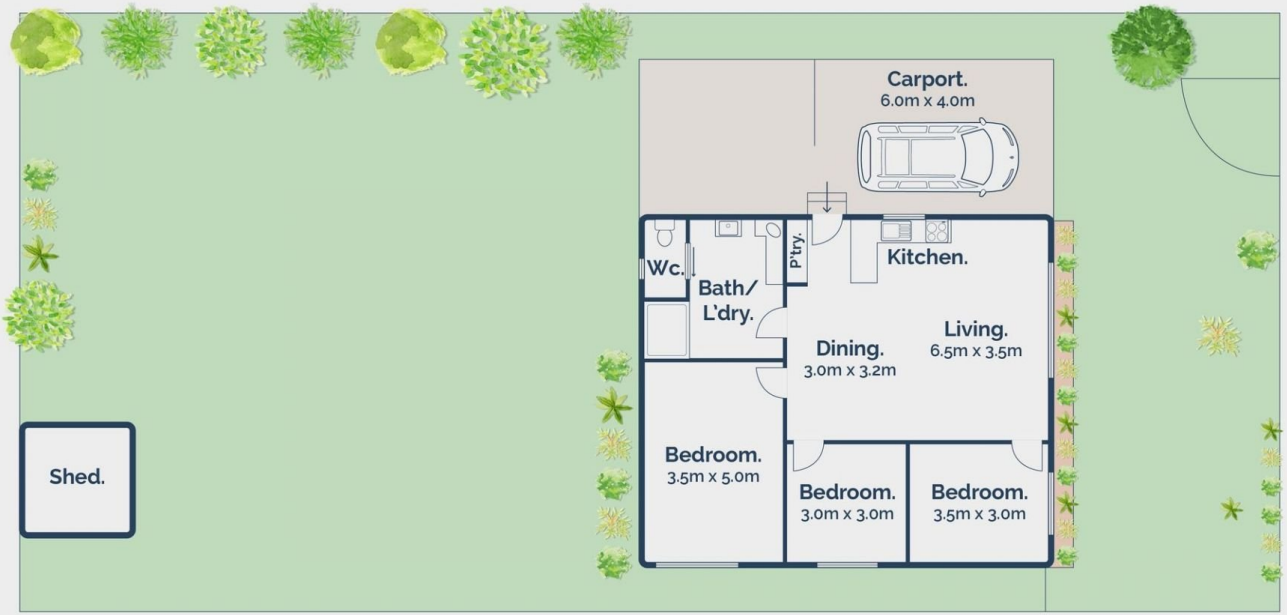
View : <https://www.bellarineproperty.com.au/8113484>



Levi Turner
03 5254 3100



Peta Walter
03 5254 3100



3 1 1

19 Sheepwash Road, Barwon Heads



Whilst bwrn.com.au has made every attempt to ensure the accuracy of the floor plan contained here, measurements are approximate and no responsibility is taken for any error, omission, or mis-statement. This plan is for illustrative purposes only.