



## 26 Clarendon Road Drysdale VIC

4 🚗 2 🚗 2 🚗

### The Feel:

Exuding quality and comfort with the light and bright interior relishing in north sun, this expansive executive home enjoys all the perks of suburban living, with the tranquility of semi-rural outlooks from your doorstep. A capacious floorplan presents as the perfect option for growing families, with four bedrooms sanctioned around the centrally set open plan living, meals and kitchen zone. Outdoor lovers will appreciate seamless exterior connection, where alfresco dining and backyard cricket will compliment your active bayside lifestyle from home. Fully established in a sought after and ultra convenient location.

### The Facts:

- Open plan living, meals & kitchen infused with natural light
- Highly desirable north facing living zone & outdoor alfresco
- Stylish kitchen hosting Omega 900mm oven with gas cooktop
- Designed for ease of livability across a free-flowing single level
- Undercover alfresco patio and spacious grassy backyard
- Scope for a swimming pool (STCA), veggie gardens & further landscaping

**Price** : \$630,000-\$670,000

**Land Size** : 466 sqm

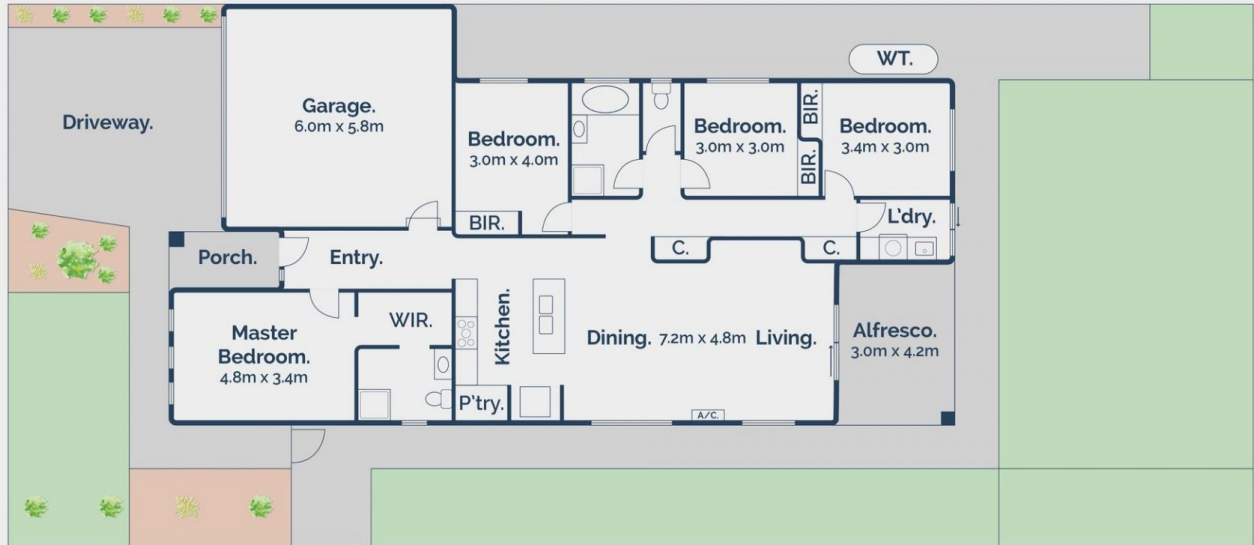
**View** : <https://www.bellarineproperty.com.au/8065200>



**Lee Martin**  
03 5297 3888



**Andrew Kibbis**  
03 5254 3100



4 2 2

## 26 Clarendon Road, Drysdale

**b** bellarineproperty  
rentals commercial sales projects

Whilst [bwrn.com.au](http://bwrn.com.au) has made every attempt to ensure the accuracy of the floor plan contained here, measurements are approximate and no responsibility is taken for any error, omission, or mis-statement. This plan is for illustrative purposes only.