



15-19 Panorama Court Clifton Springs VIC

4 2 2

The Feel:

Elevated on almost five acres overlooking Corio Bay, this custom home and productive property captures the essence of both sea and tree-change living while embracing the semi-sustainable lifestyle you've long dreamed about. Designed for view-swept indoor-outdoor entertaining, the 4-bedroom home at the end of a rural cul-de-sac feels miles away, yet is only moments from the everyday amenities of the Drysdale township. Venture outside and you'll discover a full permaculture set up complete with established orchards, chicken pen, machinery sheds, and a preserving/packing room. Beautifully serene with just the local birdlife as company, prepare to enjoy the tranquil surrounds while exploring the property's potential.

The Facts:

Peaceful and private family home on a productive 1.81ha (approx.) site
-Serenely set at the top of a rural cul-de-sac, yet only 5mins to the Drysdale township
-Elevated position offers far-reaching views over Corio Bay to the You Yangs

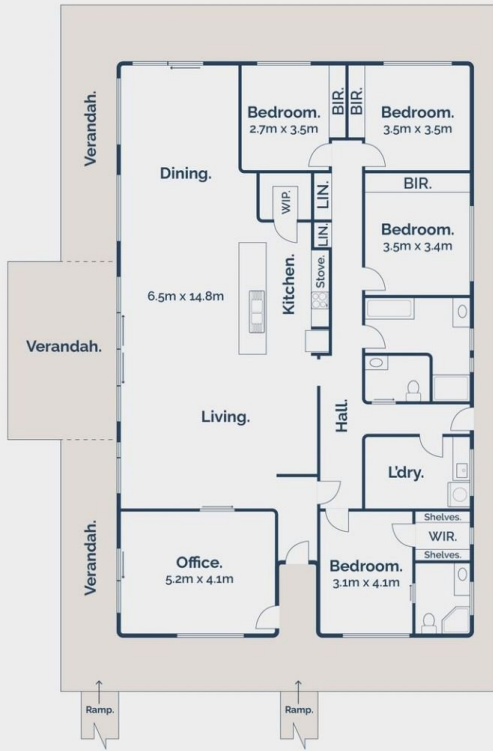
Price : \$1,950,000-\$2,145,000
Land Size : 1.81 ha
View : <https://www.bellarineproperty.com.au/8027720>



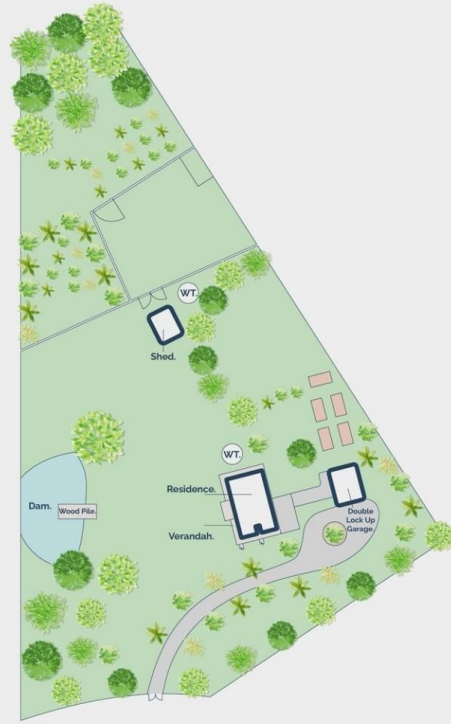
Andrew Kibbis
03 5254 3100



Lee Martin
03 5297 3888



Ground Floor.



Site Plan.

4 2 2

15-19 Panorama Court, Clifton Springs



Whilst bwr.com.au has made every attempt to ensure the accuracy of the floor plan contained here, measurements are approximate and no responsibility is taken for any error, omission, or mis-statement. This plan is for illustrative purposes only.