

12-13 Chanticleer Place Barwon Heads VIC

5 🏠 3 🚗 2 🚗

The Feel:

Experience the ultimate in relaxed family living in this impeccable, custom-designed residence, occupying an expansive 742sqm (approx.) parcel in a prime Barwon Heads location. Striking in its level of finish, the sprawling 5-bedroom residence has been designed for an effortless indoor/outdoor lifestyle and resort-style entertaining. Premium interiors of vast space and high-end inclusions are matched by multiple outdoor zones including undercover decking and lush lawn area, all centred around a sparkling heated swimming pool and spa. Your ultimate family lifestyle awaits!

The Facts:

- Expansive family home, custom designed by Cactus Designs & located in a quiet, no-through traffic location
- Offering an exceptional family lifestyle, vast interiors are positioned to maximise the north-facing outdoor zones dedicated to relaxation & easy entertaining
- Considered style & high quality is evident from the outset with a spotted gum entry portico creating a welcoming impression
- Set over 2 levels, the impressive floorplan encompasses 5

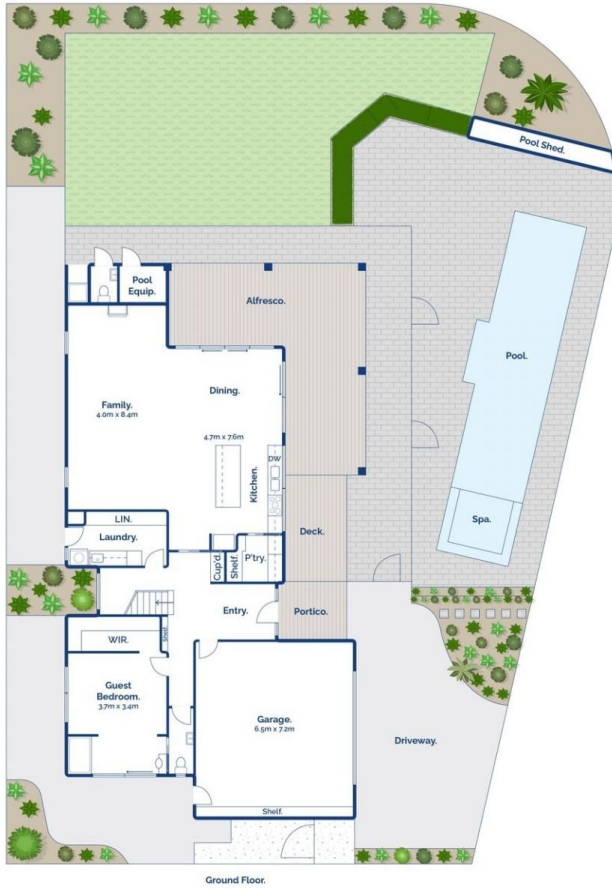
Price : \$ 2,505,000
Land Size : 741 sqm
View : <https://www.bellarineproperty.com.au/7302881>



Levi Turner
03 5254 3100



Peta Walter
03 5254 3100



5 3 2

12-13 Chanticleer Place, Barwon Heads

bellarine property
rentals. commercial. sales. projects.

Whilst bwr.com.au has made every attempt to ensure the accuracy of the floor plan contained here, measurements are approximate and no responsibility is taken for any error, omission, or mis-statement. This plan is for illustrative purposes only.