



**1 Zen Lane Curlewis VIC**

4 2 2

**The Feel:**

With frontage to Percy Cherry Park, an easy stroll around the corner to a thriving dining and retail hub, and a pleasant wander along walking tracks to the bay, this as-new family home offers a highly sought-after Curlewis location to match its generous living. Ticking all the boxes for ultimate family living, the 2.5-year-old residence has been designed to maximise both space and comfort. Open and airy interiors cleverly enhance family life, thanks to 3 living areas, 4 bedrooms plus a study. Relaxation is also part of the package, whether you choose to entertain from your undercover alfresco with adjoining hot tub, or unwind from your elevated balcony with picturesque outlook over the neighbouring treed parkland.

**The Facts:**

- Immaculately presented double storey Urban Edge Homes property, with stunning treetop outlook over the picturesque Percy Cherry Park
- High ceilings & open living zones enhance the sense of space & light
- Cleverly designed to accommodate large families, the spacious interiors include 3 living areas, 4 bedrooms &

**Price** : \$ 970,000  
**Land Size** : 416 sqm  
**View** : <https://www.bellarineproperty.com.au/6936879>



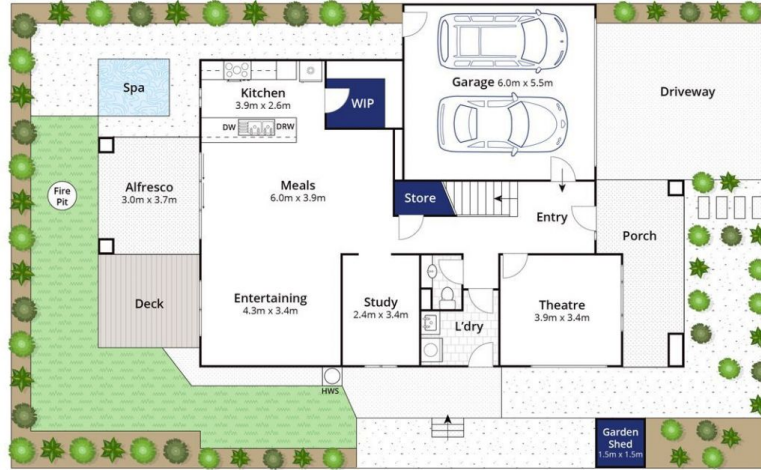
**Christian Bartley**  
03 5254 3100



**Lee Martin**  
03 5297 3888



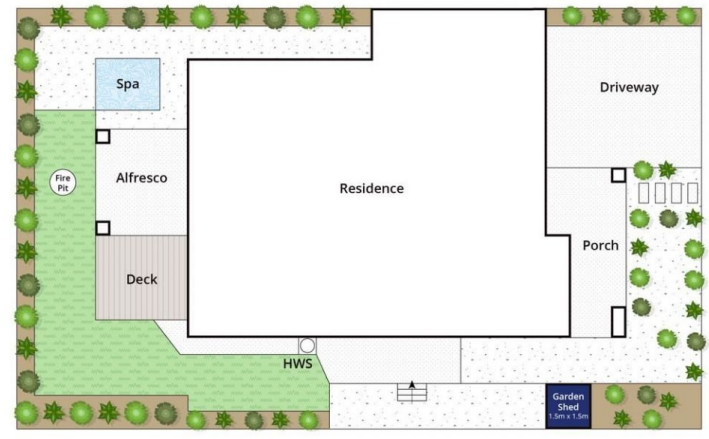
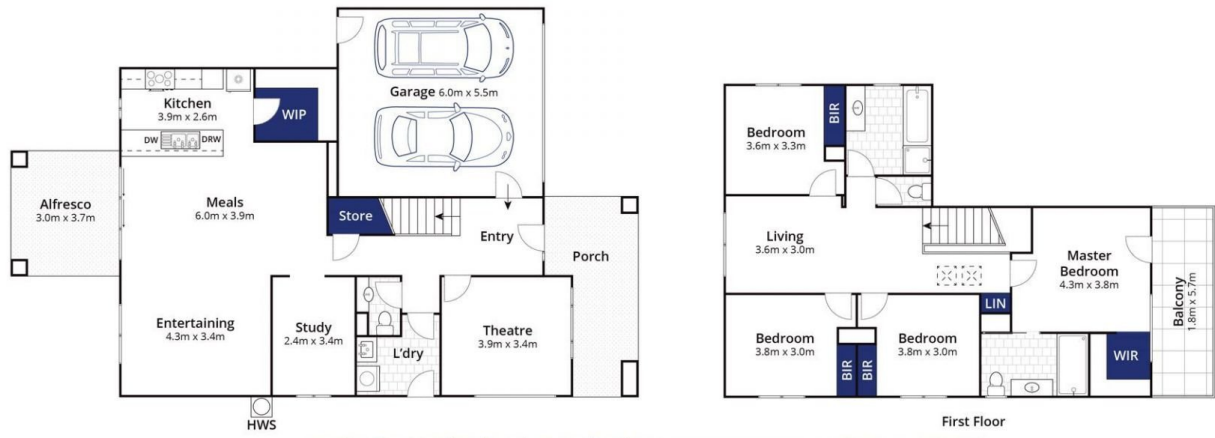
First Floor



Site Plan

Whilst [bwr.com.au](http://bwr.com.au) has made every attempt to ensure the accuracy of the floor plan contained here, measurements are approximate and no responsibility is taken for any error, omission, or mis-statement. This plan is for illustrative purposes only.

## 1 Zen Lane, Curlewis



Site Plan

Whilst [bwr.com.au](http://bwr.com.au) has made every attempt to ensure the accuracy of the floor plan contained here, measurements are approximate and no responsibility is taken for any error, omission, or mis-statement. This plan is for illustrative purposes only.

# 1 Zen Lane, Curlewis