



**1/3 Emperor Drive Ocean Grove Vic**

3 2 1

**The Feel:**

A relaxed lifestyle awaits with this wonderfully positioned home, nestled behind the sand dunes and overlooking the stunning natural aspect of the Begola Wetlands. A short stroll to some of Ocean Grove's best beaches, cafés and parklands, this double storey property on its own title offers a sense of privacy not usually achieved with townhouse dwellings. Open plan, light-filled living zones have been designed to take in the beautiful organic outlook, while three bedrooms and two bathrooms cater to versatile living arrangements.

In the evening, watch the sun set from one of your west-facing balconies as you unwind after a long day of sand, sun and surf. Lose yourself in the sound of the waves through the windows or the frogs from the creek behind the house. Whether you are looking to downsize, secure an investment or a low-maintenance holiday home, this well-positioned townhouse offers an ideal opportunity.

**The Facts:**

- Double-storey townhouse situated on its own title, creating a feeling of privacy
- Ideally located within a 5min walk to 8W & 9W beaches,

**Land Size** : 300 sqm

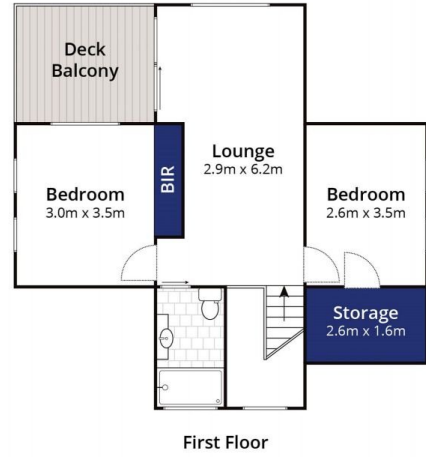
**View** : <https://www.bellarineproperty.com.au/6761663>



**Andrew Kibbis**  
03 5254 3100



**Toby Lee**  
03 5254 3100



Whilst [bwr.com.au](http://bwr.com.au) has made every attempt to ensure the accuracy of the floor plan contained here, measurements are approximate and no responsibility is taken for any error, omission, or mis-statement. This plan is for illustrative purposes only.

# 1/43 Emperor Drive, Ocean Grove