






10 Mirabell Street Curlewis VIC

4  2  2 

The Feel:

Well proportioned home in established estate location will allow for relaxed entertaining in central open plan areas, opening to covered alfresco for year round options. Close proximity to parklands, education facilities, shopping precinct and medical care. Oversized master bedroom with full ensuite and walk in robe also provides a quiet escape with access to covered alfresco with independent climate control. Private and secure low maintenance gardens front and rear ensure your time is spent enjoying the Bellarine Peninsula.

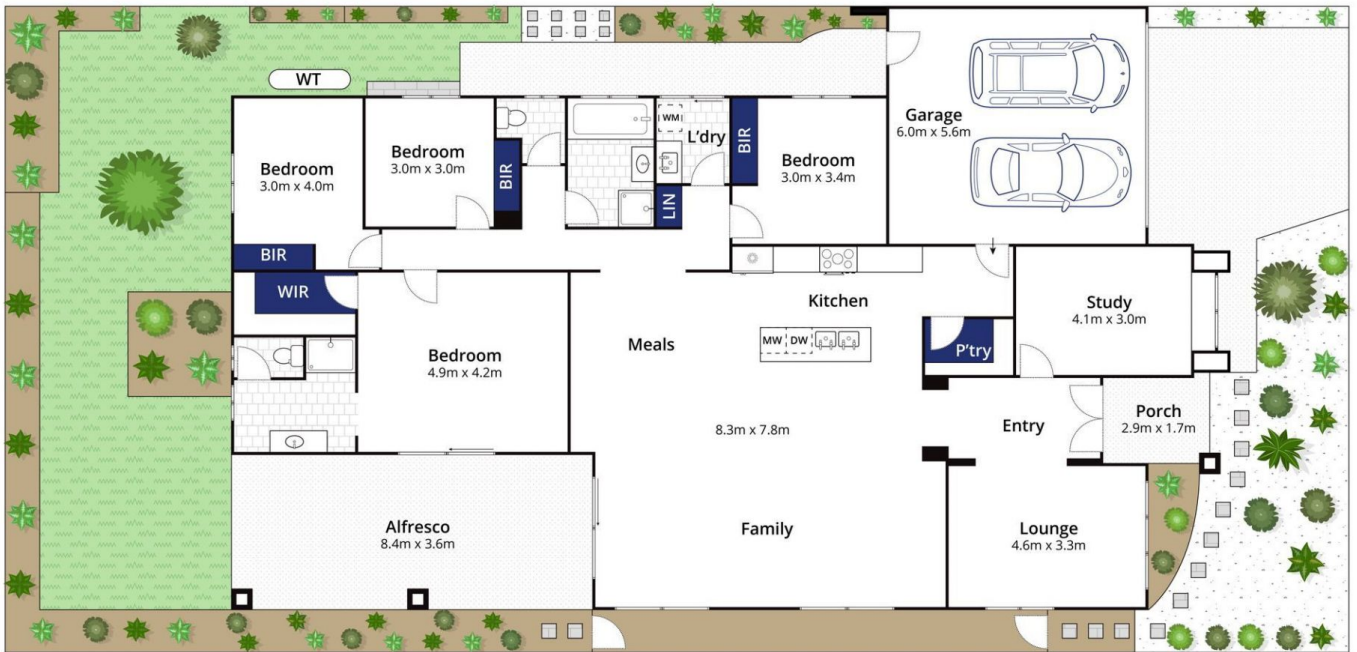
The Facts:

- Flexible floorplan with central living zone
- Four bedrooms plus study with fitted storage
- 9 ft ceiling height
- Ducted heating and cooling throughout
- Entertainers kitchen with WIP, oversized breakfast bar, 900ml gas cooking, dishwasher & ample storage
- Master bedroom with space for parents retreat, full ensuite, separate toilet and walk in robe
- Minor bedrooms all with robes
- Ducted vacuum

Price : \$ 765,000
Land Size : 512 sqm
View : <https://www.bellarineproperty.com.au/67010>
39



Lee Martin
03 5297 3888



Whilst bwr.com.au has made every attempt to ensure the accuracy of the floor plan contained here, measurements are approximate and no responsibility is taken for any error, omission, or mis-statement. This plan is for illustrative purposes only.

10 Mirabell Street, Curlewis

bellarine property
Rentals | Commercial | Sales | Projects