

172-190 Whitcombes Road Drysdale VIC

4 🚗 3 🏠 4 🚗

High set with exquisite views over beautiful Port Phillip Bay and the neighbouring Manzanillo Olive Grove, this well positioned property entices you beyond its lush garden frontage and contrasting contemporary exterior; sweeping you up in the romance of never wanting to leave home. Prestigious in position, individual in design, welcome to 'Camiano'.

Price : \$ 1,700,000
Land Size : 5.45 Acres
View : <https://www.bellarineproperty.com.au/41687>
 48

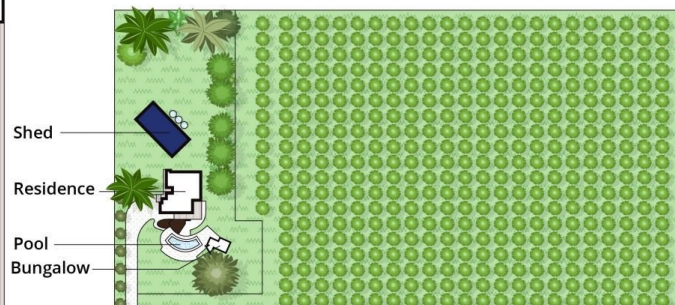
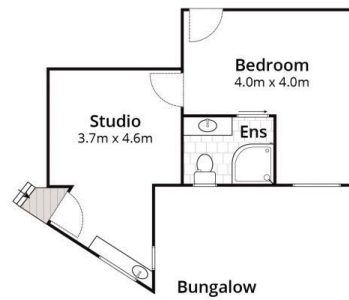
- This stunning rural vista boasts a beautiful open plan living zone, bathed in north sun with unrivalled rural aspects
- Heightened glazing encapsulates Port Phillip Bay views, dually flooding the interior with striking botanical outlooks
- Traditional in design, the u-shaped kitchen has a 900mm gas cooktop, timber benchtops and walk in pantry
- Bespoke joinery adds an individual touch to the meals area, with french doors linking the outdoors
- A north facing pergola entangled in grapevines is the ideal setting for relaxation, overlooking the crescent shaped pool
- This enviable outdoor entertainment area is complete with pizza oven, barbeque and under mounted sink
- Offering a well structured layout with three oversized bedrooms, each featuring their own unique elements
- Luxurious in scale, the master suite boasts a walk in robe,



Lee Martin
 03 5297 3888



Levi Turner
 03 5254 3100



Whilst bwrn.com.au has made every attempt to ensure the accuracy of the floor plan contained here, measurements are approximate and no responsibility is taken for any error, omission, or mis-statement. This plan is for illustrative purposes only.

172-190 Whitcombes Road, Drysdale

bellarine **b** property