



**23-25 Milborne Drive Ocean Grove VIC**

4 2 2

The word is out that Ocean Grove is the place to be, with families from all over realising the benefits of relaxed coastal living, in a natural and community focused environment. This immaculate family home spreads out over 2 levels offering an established entry point into this booming coastal market - with the benefit of rare outdoor space for children to truly thrive. Don't think about it any longer, the time is now!

- Set on a 519sqm (approx.) corner block, this established 4BR family home is better than new
- Offering 3 light filled living zones over two levels, with entertaining and living on the ground floor
- Kids can explore and play in vegie gardens and the sandpit at home, with the lake across the street!
- Appealing and modern façade with white cladding, contrasting brickwork, and warm timbers
- Timber glazed panel door lights the entryway and hall - opening up to zoned downstairs living
- A lounge area sits at the façade wrapped by windows that frame native gardens, and lake views
- Floating timber floors flow to dining, gifted with tranquil lake views at the other end of the hall

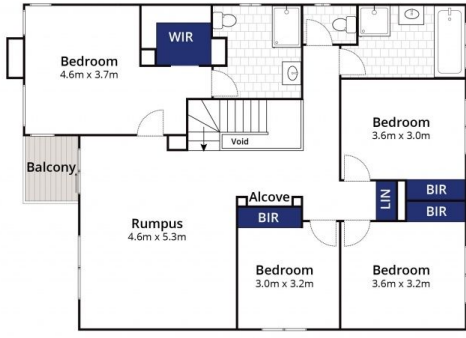
**Price** : \$ 652,500  
**Land Size** : 519 sqm  
**View** : <https://www.bellarineproperty.com.au/41572>  
 51



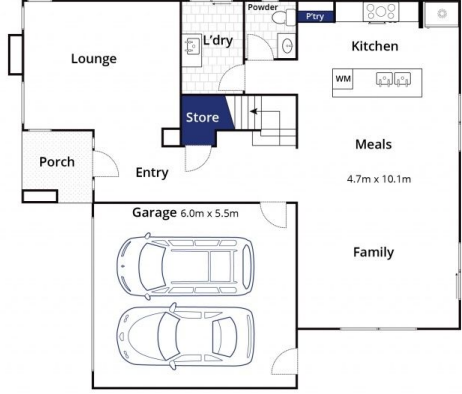
**Christian Bartley**  
 03 5254 3100



**Toby Lee**  
 03 5254 3100



First floor



Ground Floor



Site Plan

Approx. Area 224m<sup>2</sup>

Whilst [bwr.com.au](http://bwr.com.au) has made every attempt to ensure the accuracy of the floor plan contained here, measurements are approximate and no responsibility is taken for any error, omission, or mis-statement. This plan is for illustrative purposes only.

**23-25 Milborne Drive, Ocean Grove**

