



## 11 Charlemont Court OCEAN GROVE VIC

4 🚗 3 🚗 5 🚗

Best of Both Worlds; this house has it all. Are you looking for Privacy + Views+ Location+ Space + a resort style family home?

Hidden away within a gorgeous landscaped garden spread over an acre in the coveted Bellevue Estate this is truly a rare opportunity to secure your private paradise. The house and gardens present with a peace and beauty that is rarely found.

At the end of an exclusive cul de sac overlooking farmland you enter a private world cleverly protected by lush and well established native gardens. Wander up the sweeping driveway and the fresh, white, and it has to be said, very pretty facade of this spacious family home greets you. Imagine arriving home to this every night. Designed with a large family in mind or just for those who covet their privacy and room to move, this peaceful retreat hosts four generous and unique living areas four bedrooms and three bathrooms.

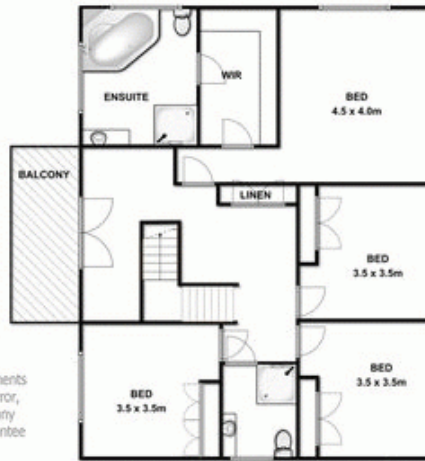
A large entry way leads to a light filled informal living and dining area overlooking the gardens and pool. The fully renovated country kitchen overlooks another informal living space and is encircled by north facing picture windows again brightened and enhanced by wonderful garden

**Price** : \$ 900,000  
**Land Size** : 3634 sqm  
**View** : <https://www.bellarineproperty.com.au/1503165>

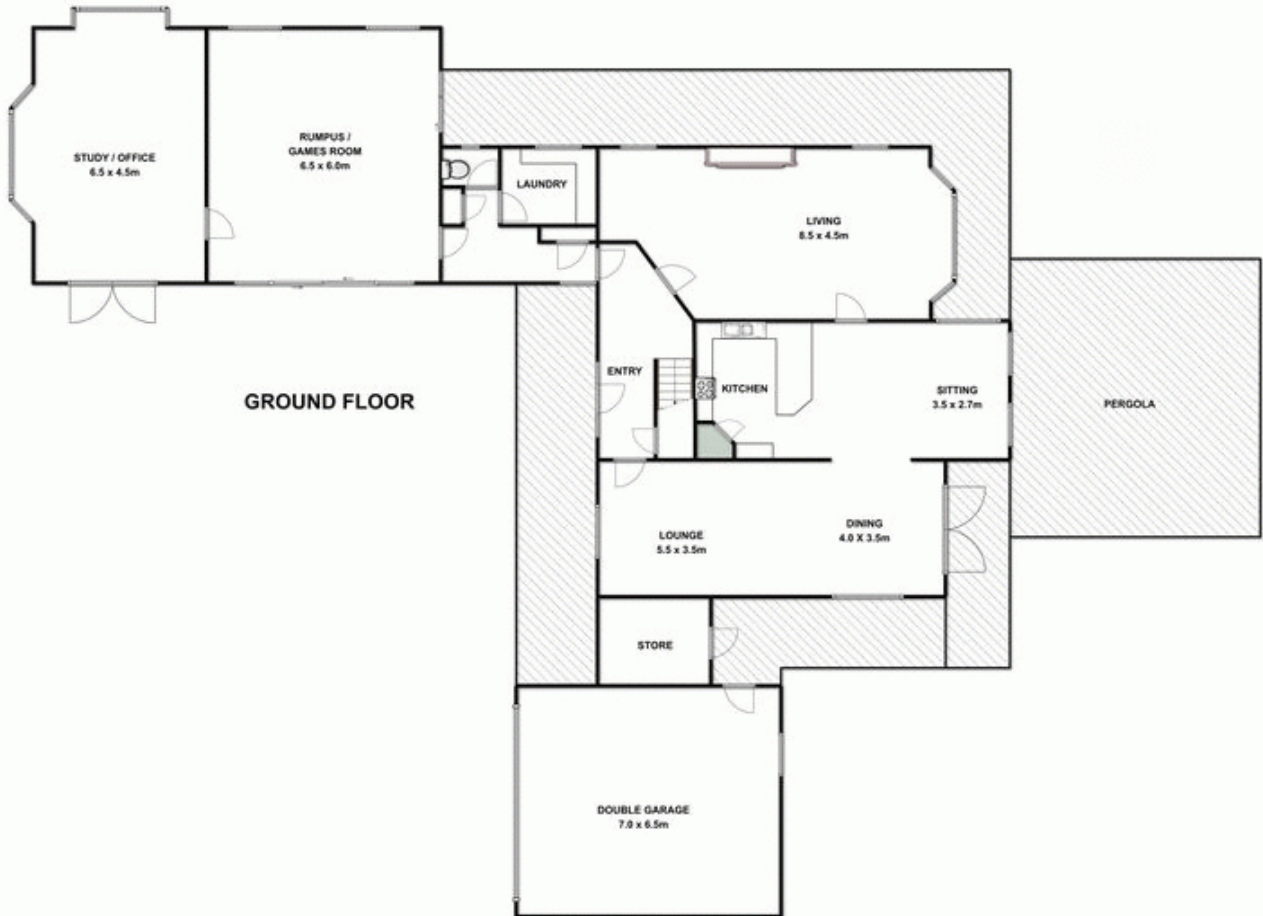


**Dan Halsey**  
03 5254 3100

### FIRST FLOOR



Whilst every attempt has been made to ensure the accuracy of the floor plan contained here, measurements of door, windows, rooms and any other items are approximate and no responsibility is taken for any error, omission, or mis-statement. This plan is for illustrative purposes only and should be used as such by any prospective purchaser. The services, systems and appliances shown have not been tested and no guarantee as to their operability or efficiency can be given.



### GROUND FLOOR