



8 Dudley Court BARWON HEADS VIC

4  2  2 

On a generous allotment in one of Barwon Heads's most popular areas, this magnificent 4-bedroom timber home provides the very best in family living: a meticulous extension has resulted in a dedicated parents' retreat upstairs comprising a living room, office and a main bedroom with walk-through robe to a superb ensuite.

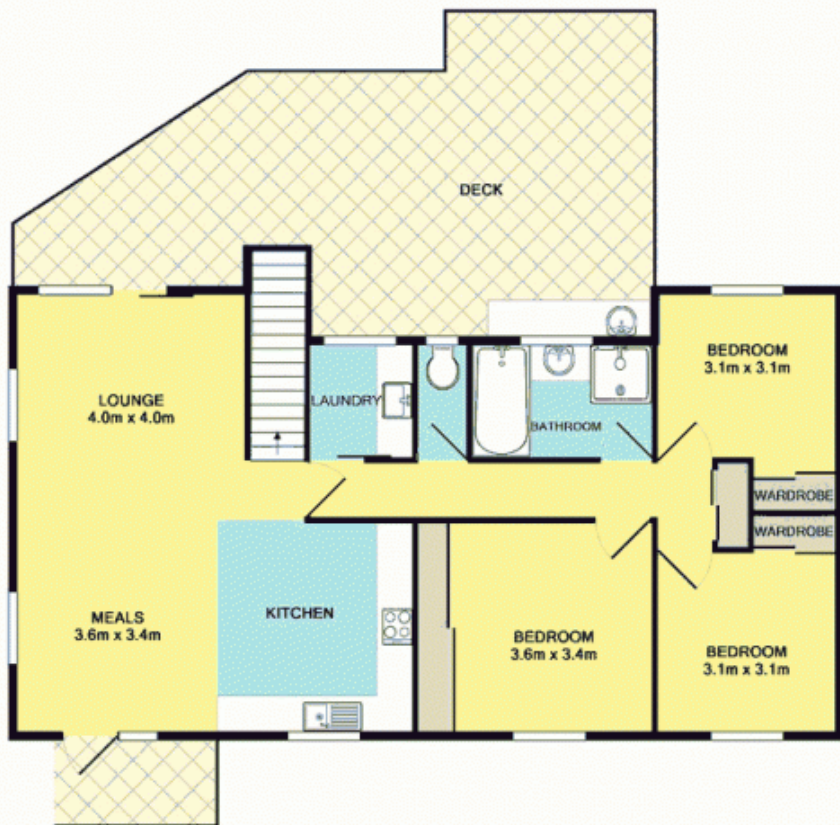
The ground floor features three bedrooms with robes; a big laundry; a pristine tiled bathroom; and a spacious living/dining area served by a good kitchen with stainless steel appliances. Sliding doors open to a sensational sheltered entertaining deck overlooking lovely lawns and landscaped drought-tolerant gardens.

With further highlights including ceiling fans throughout, a split system on both floors, and a double garage with covered storage area at the rear, this exceptional home in an unbeatable location is ready and waiting for a new family to call it their own.

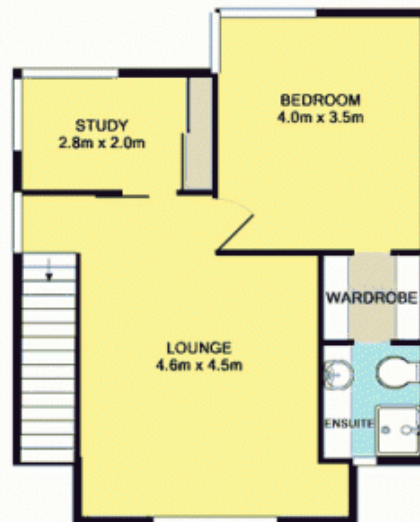
Price : \$ 0
Land Size : 700 sqm
View : <https://www.bellarineproperty.com.au/1503147>



Christian Bartley
03 5254 3100



GROUND FLOOR



1ST FLOOR

TOTAL APPROX. FLOOR AREA 150.6 SQ.M

Whilst every attempt has been made to ensure the accuracy of the floor plan contained here, measurements of doors, windows, rooms and any other items are approximate and no responsibility is taken for any error, omission, or mis-statement. This plan is for illustrative purposes only and should be used as such by any prospective purchaser. The services, systems and appliances shown have not been tested and no guarantee as to their operability or efficiency can be given.