

2/48 Asbury Street West OCEAN GROVE VIC

2 1 1

The external facade of this home shows an imposing, creamy coloured townhouse. Fresh, modern, immaculately presented. Inside delivers on this promise and also holds some sweet surprises.

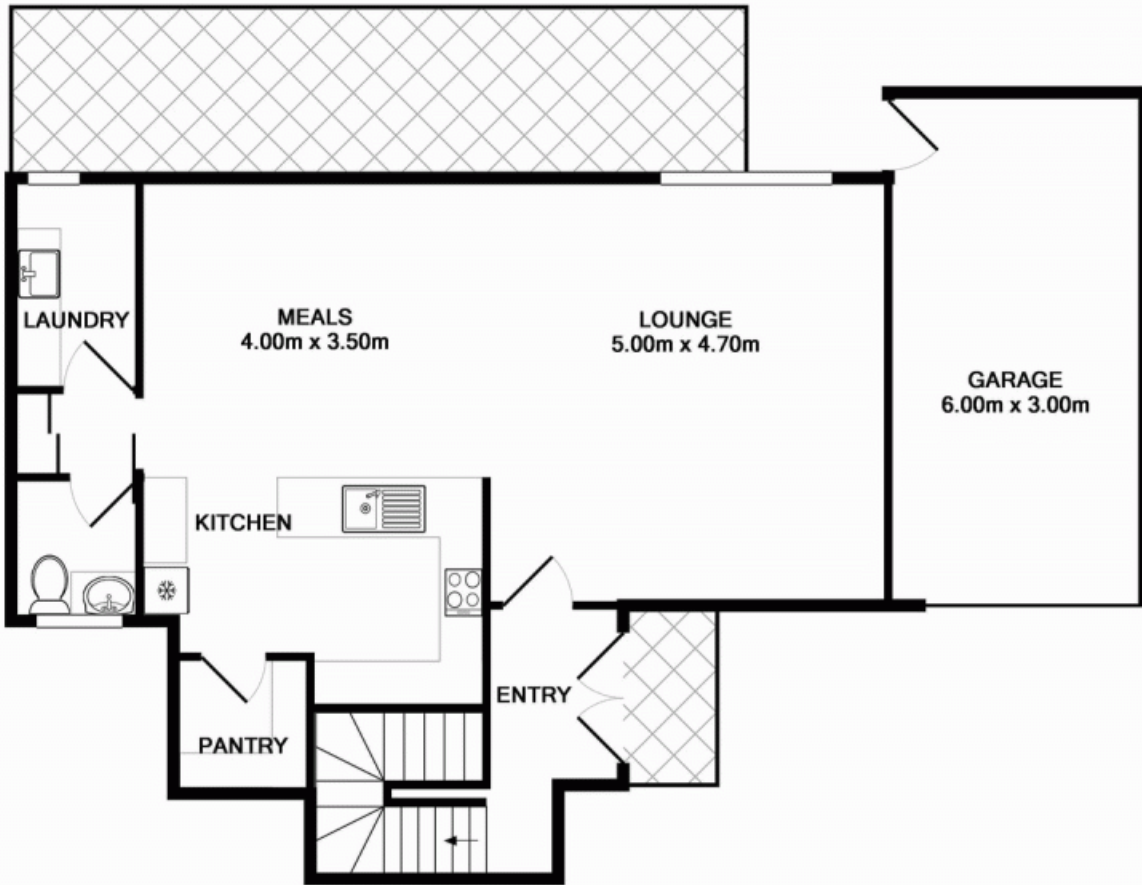
Stepping into the airy entry way you will be immediately delighted by the extraordinarily beautiful curving timber staircase. Encased in clean glass borders and lit by plantation-shuttered windows it leads spectacularly towards a striking angled roof. Downstairs more superior design awaits within the main living space.

The deluxe modern kitchen has a wide walk-in-pantry, soft-touch drawers and Caesartone-look bench tops. The adjacent tiled dining area is light and bright opening onto a secluded timber deck, ideal for sunny afternoon cuppas. At hand to the living area is a swish powder room and a conveniently placed laundry. The adjoining lounge is a comfortable spot with plush carpet underfoot, reverse-cycle air-conditioning and sunlight streaming in through a broad window.

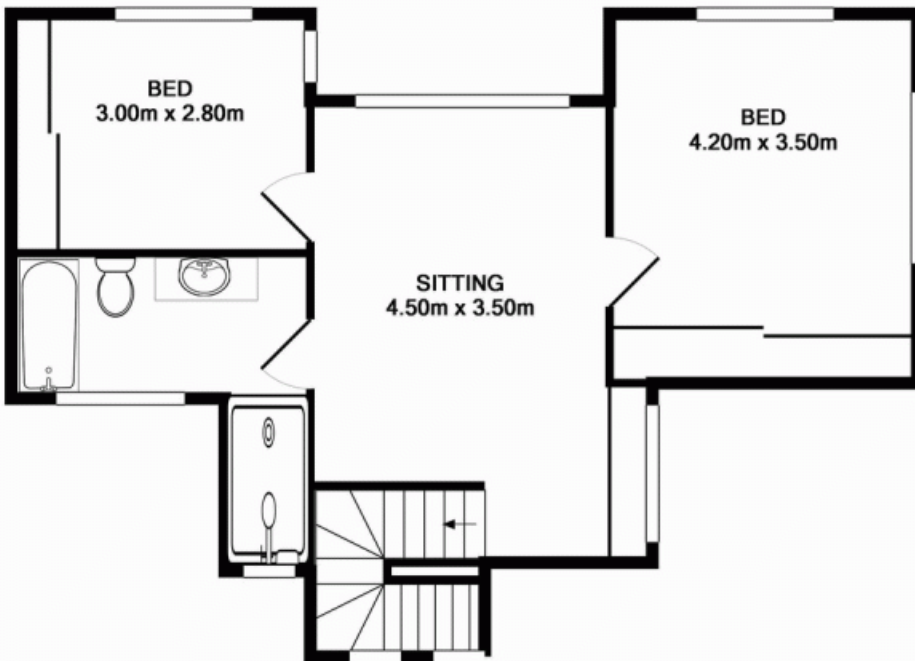
Price : \$ 440,000
Building Size : 16 Sqrs
Land Size : 250 sqm
View : <https://www.bellarineproperty.com.au/1503145>



Dan Halsey
03 5254 3100



GROUND



LEVEL 1

Whilst every attempt has been made to ensure the accuracy of the floor plan contained here, measurements of doors, windows, rooms and any other items are approximate and no responsibility is taken for any error, omission, or mis-statement. This plan is for illustrative purposes only and should be used as such by any prospective purchaser. The services, systems and appliances shown have not been tested and no guarantee as to their operability or efficiency can be given.