



31 The Esplanade OCEAN GROVE VIC

4 2 2

If the beach is beckoning, you won't get much closer than this delightful two-storey home nestled among the ti-tree. Directly opposite the main surf beach, yet hidden behind a thickly vegetated road reserve, the four-bedroom home feels a world away.

Price : \$ 1,120,000
Land Size : 792 sqm
View : <https://www.bellarineproperty.com.au/1503108>

Ideal for holiday or permanent living, investment or development (SCTA), this property has much to offer the astute buyer seeking the ultimate in beachside lifestyle.



Dan Halsey
03 5254 3100

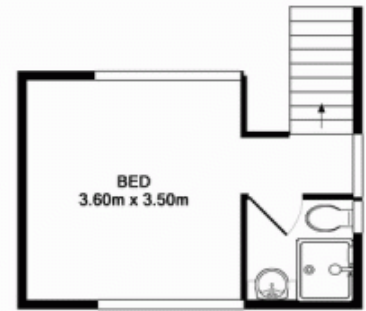
Access to the property is from Osborne St. A timber pathway meanders through native coastal gardens and shell-grit covered ground to extensive outdoor decking area over several levels. Inside the home is delightfully relaxed and beachy, yet surprising spacious, offering a practical kitchen, sunny dining area and living areas over two levels.

A high raked ceiling with clerestory windows gives the living areas a fantastic sense of space and light. The kitchen features a central island bench with excellent storage, a double sink and upright stove.

Step down to the lower level carpeted second living area



GROUND FLOOR



1ST FLOOR

Whilst every attempt has been made to ensure the accuracy of the floor plan contained here, measurements of doors, windows, rooms and any other items are approximate and no responsibility is taken for any error, omission, or mis-statement. This plan is for illustrative purposes only and should be used as such by any prospective purchaser. The services, systems and appliances shown have not been tested and no guarantee as to their operability or efficiency can be given.

Osbourne Street



The Esplanade