



4 Elva Road OCEAN GROVE VIC

3 2 2

Just three years old in a fantastic location offering easy access to shops, schools and beaches, this as-new modern home provides comfort, class and coastal convenience. With extra-high ceilings and distinctive use of lines and angles throughout, this exceptional home would be perfect for young families, holidaymakers and investors alike.

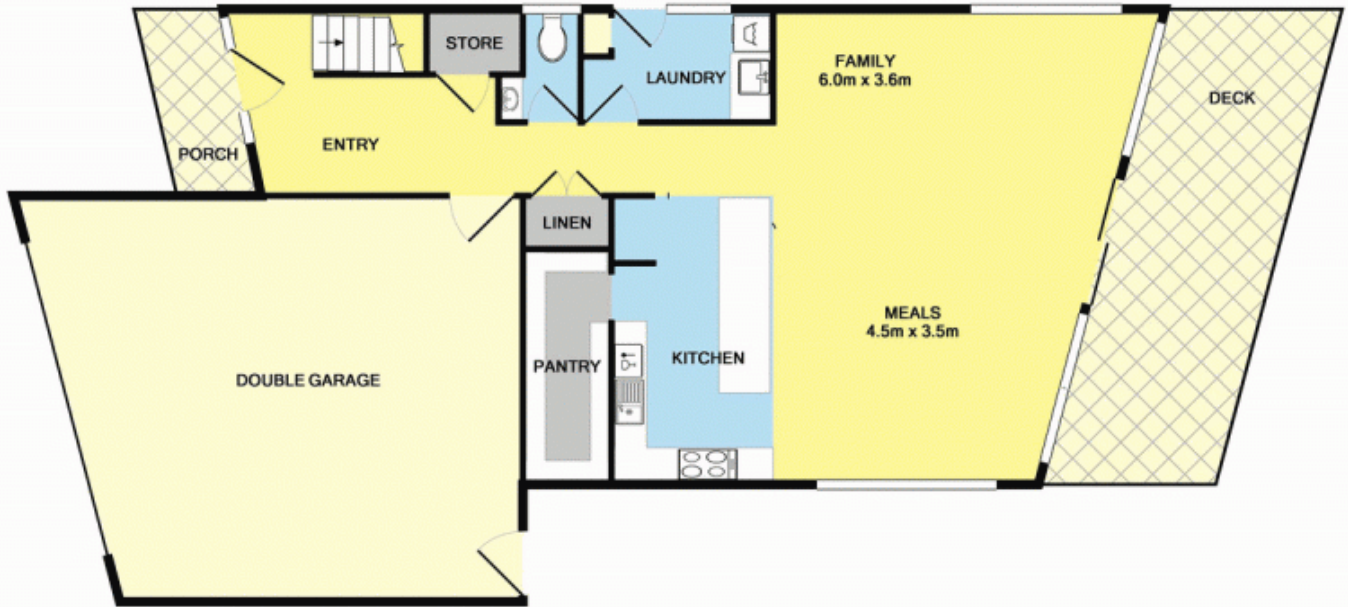
Beyond the inviting front deck it features gleaming polished timber flooring in the entry and spacious open-plan living/dining area, with feature gas log fire and sliding doors to a brilliant rear deck and landscaped lawn and gardens; and a superb kitchen with abundant storage and stainless steel appliances including dishwasher and 900mm oven.

The fully carpeted upper floor features a study; a spacious step-down living room with north-facing balcony; three bedrooms with robes - the main with walk-in robe and superb tiled ensuite with double shower; and a tiled bathroom with separate toilet. Also featuring a downstairs powder room, ducted heating and cooling, a laundry with chute, low-maintenance gardens and a garage with internal and rear access, this wonderful home has it all. Arrange an

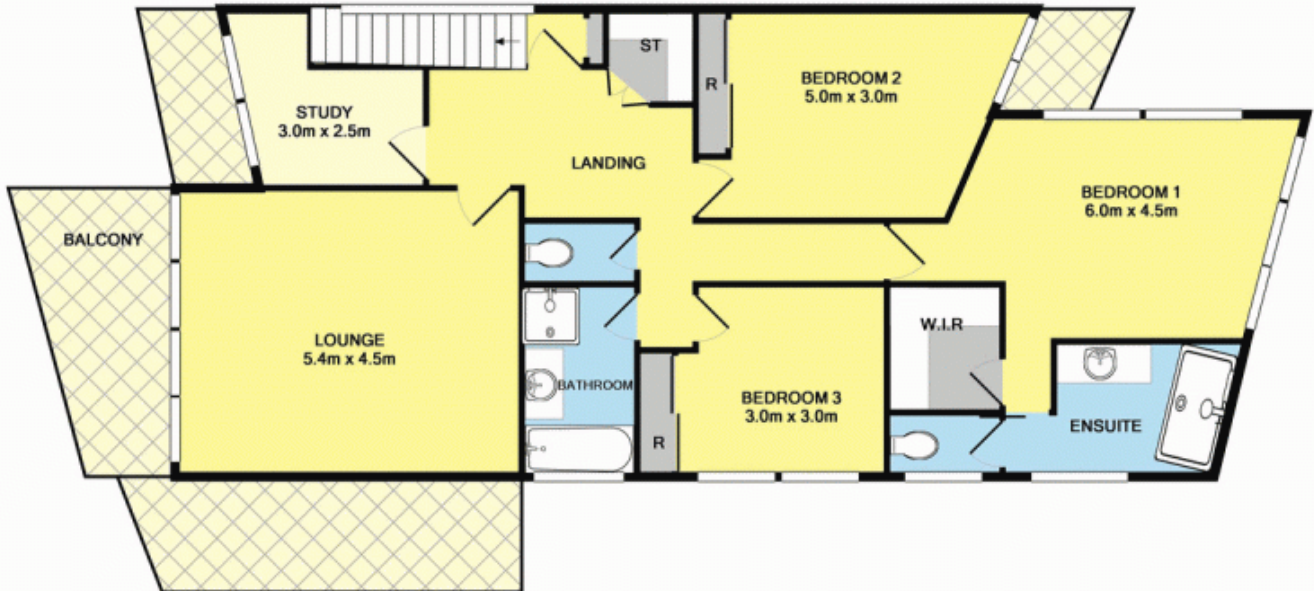
Price : \$ 560,000
Land Size : 341 sqm
View : <https://www.bellarineproperty.com.au/1503083>



Dan Halsey
03 5254 3100



LOWER FLOOR



UPPER FLOOR

Whilst every attempt has been made to ensure the accuracy of the floor plan contained here, measurements of doors, windows, rooms and any other items are approximate and no responsibility is taken for any error, omission, or mis-statement. This plan is for illustrative purposes only and should be used as such by any prospective purchaser. The services, systems and appliances shown have not been tested and no guarantee as to their operability or efficiency can be given.